

Relief Valves

GRESEN®

GRESEN® - RELIEF VALVES

UP TO 20 GPM CAPACITY RELIEF VALVES

Models JT and JL Relief Valves are used to limit the maximum pressure which can be applied to the portion of the hydraulic circuit to which they are connected. They may be used as a system relief when installed between the pump and the first of a series of separate control valves or as a line relief by installing between a control valve port and actuator.

Adjustable valves can be readily reset and feature a jam nut to lock the new setting.

Shim-set valves are best left unchanged after installation due to manufacturing tolerances.

Features

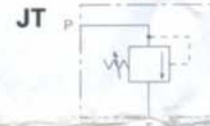
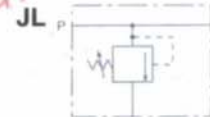
- Two Housings Available For Tee-Mounting or In-Line Mounting.
- Adjustable and Non-Adjustable Models Available.
- Compacted Graphite Bodies.
- Replaceable, Hardened Seat.

MODEL JT MODEL JL

MODEL JL



Input



Winch

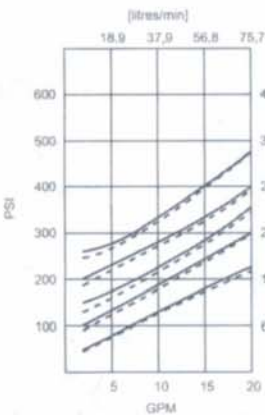
MODEL JT



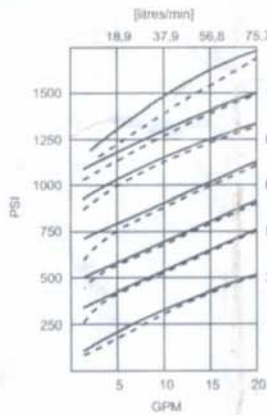
Specifications

Capacity (nominal) Adjustable: Up to 20 GPM (75 litres/min)
Maximum Operating Pressure: 2500 PSI (172 bar)
Shipping Weight: Approx. 2 1/2 lbs. (1,1 kg)

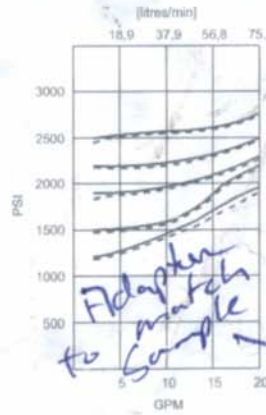
PERFORMANCE DATA



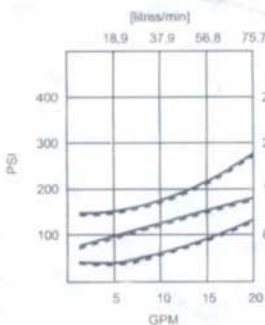
JT (LP) Relief With 953-001 Spring
145-400 PSI [10-27,6 bar]. Crack.



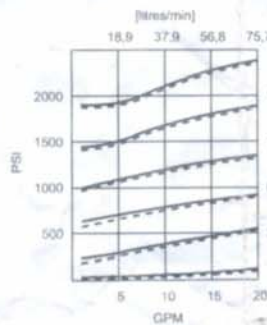
JT Relief
290-1200 PSI [20-83 bar]. Crack



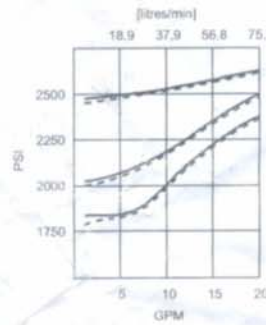
JT (HP) Relief
1201-2500 PSI [83-172 bar]. Crack.



JT-N (LP) Relief With 987-011 Spring
50-200 PSI [3,4-13,8 bar]. Crack



JT-N Relief
300-1800 PSI [20,7-124 bar]. Crack



JT-N (HP) Relief
1801-2500 PSI [124-172 bar]. Crack

— Increasing Flow
- - - Decreasing Flow
150 SUS Oil

Adapten same as red cap

