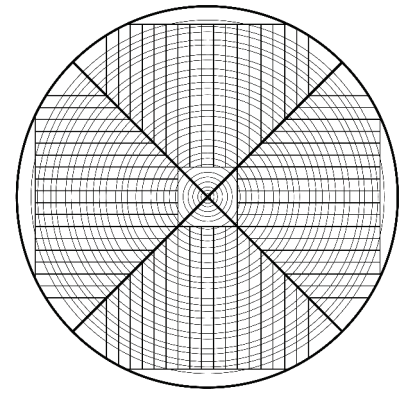


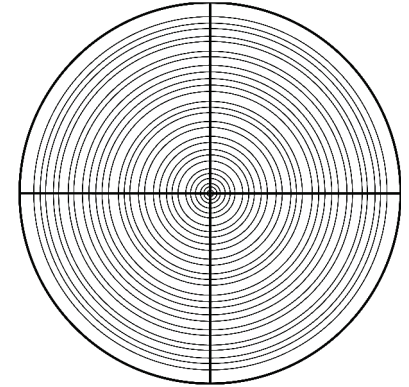
# Quartersaw Method 3

This method is best for logs that are 30" or better in diameter. It produces the widest possible boards and should you choose, the boards can retain a natural edge. This is my favorite way to quartersaw. The cuts pictured here represent a 32" diameter log.



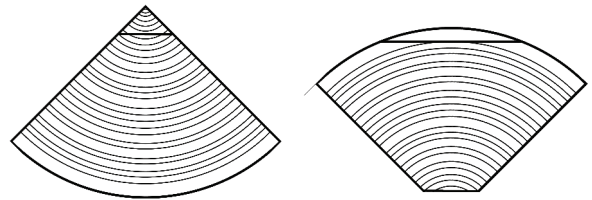
## STEP 1

Rip the log into 4 quarters. If the log is greater than the maximum cutting width of the mill (28"), I do this with a Beam Machine guide on my 36" chainsaw. Align the ripping cuts so that they intersect at the pith of the log. For pictures of this operation, please visit my website at [www.scottbanbury.com](http://www.scottbanbury.com). I have successfully ripped quarters out of Oak logs up to 60" in diameter.



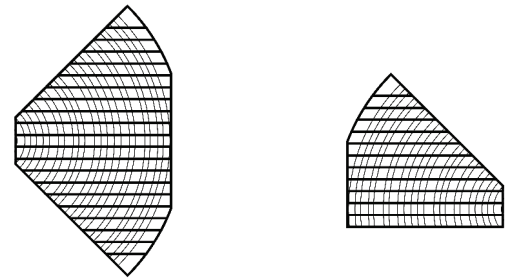
## STEP 2

Place each quarter on the mill with the pith-point up and cut off the first 8-10 growth rings. This gets the juvenile wood out of the resulting lumber and makes for less crooking in drying. Then flip the quarter over and cut off the sapwood.



## STEP 3

Turn the quarter up against the vertical supports and saw down until a flat is achieved. Then flip the remainder of the quarter over and saw down to the bed of the mill.



## STEP 4

If desired, edge those boards not having square edges and mark the pieces so that you can bookmatch the quarters later.

**Midtown Logging & Lumber Company**  
Custom sawing and Urban Wood Recovery