

OLATHE CHIPPER

MODEL 816

PARTS BOOK & OWNERS MANUAL MODEL 816

Olathe Manufacturing, Inc.

100 INDUSTRIAL PARKWAY
INDUSTRIAL AIRPORT, KANSAS 66031

PH: (913) 782-4396
1-800-255 6438

Olathe Manufacturing, Inc.

100 INDUSTRIAL PARKWAY
INDUSTRIAL AIRPORT, KANSAS 66031

PH: (913) 782-4396
1-800-255-6438

PERFORMANCE GUARANTY

OLATHE MANUFACTURING COMPANY OF OLATHE, KANSAS, GUARANTEES TO THE ORIGINAL PURCHASER OF A NEW OLATHE PRODUCT, THAT THE SAME IS FREE FROM DEFECTS IN WORKMANSHIP, OR MATERIALS THAT MAY CAUSE PERFORMANCE FAILURES, SUBJECT TO THE CONDITIONS STATED HEREIN.

THE GUARANTY IS LIMITED TO A PERIOD OF (180) DAYS FROM THE DATE OF PURCHASE. IF USED FOR RENTAL PURPOSES THE PERIOD OF TIME IS NINTY (90) DAYS. OLATHE MANUFACTURING COMPANY WILL REPLACE ANY DEFECTIVE PARTS, EXCLUSIVE OF LABOR, FREE OF CHARGE F.O.B. ANY AUTHORIZED OLATHE SERVICE STATION.

THIS GUARANTY DOES NOT APPLY TO ANY PARTS THAT ARE MANUFACTURED AND GUARANTEED BY THE MANUFACTURER THEROF; NOR DOES IT APPLY WITH RESPECT TO ANY PRODUCT OR PARTS THAT (1) HAS BEEN REPAIRED BY ONE OTHER THAN AN AUTHORIZED OLATHE SERVICE STATION (2) HAS HAD ORIGINAL PARTS REMOVED, OR OTHERWISE ALTERED WITHOUT SPECIFIC AUTHORIZATION BEFOREHAND BY OLATHE MANUFACTURING COMPANY OR (3) HAS HAD PLACED UPON IT, OR ATTACHED TO IT ANY PART OR PRODUCT NOT SOLD OR APPROVED BY OLATHE MANUFACTURING COMPANY (4) HAS BEEN DAMAGED OR IMPROPERLYUSED OR (5) HAS NOT BEEN PROPERLY ADJUSTED, LUBRICATED, OR MAINTAINED BY THE USER.

THIS WARRANTY IS IN LIEU OF AND EXCLUDES ALL OTHER GUARANTEES AND CONDITIONS OF MERCHANTABILITY AND FITNESS OF PURPOSE. ACCEPTANCE OF AN OLATHE PRODUCT CONSTITUTES AN AGREEMENT THAT OLATHE MANUFACTURING COMPANY SHALL HAVE NO LIABILITY FOR ANY SPECIAL, OR CONSEQUENTIAL DAMAGES.

FOREWARD

THIS MANUAL CONTAINS OPERATING, MAINTENANCE, AND ADJUSTMENT INSTRUCTIONS, AS WELL AS THE PARTS LISTS FOR THE MODEL 816 OLATHE CHIPPER.

IF ADDITIONAL INFORMATION NOT INCLUDED IN THIS MANUAL IS NEEDED, OR MECHANIC SERVICE IS REQUIRED, CONTACT YOUR NEAREST AUTHORIZED OLATHE MANUFACTURER SERVICE STATION.

ALL NEW AND UNUSED OLATHE MANUFACTURING, INC. PRODUCTS ARE GUARANTEED TO THE ORIGINAL PURCHASER TO BE FREE OF DEFECTS IN WORKMANSHIP AND MATERIALS FOR A PERIOD OF ONE HUNDRED EIGHTY (180) DAYS FROM THE DATE OF PURCHASE. SEE PAGE 1 OF THIS MANUAL FOR THE COMPLETE TEXT OF THIS GUARANTEE.

WHEN ORDERING PARTS FOR YOUR MODEL 816 OLATHE CHIPPER, ALWAYS SPECIFY THE SERIAL NUMBER AND MODEL NUMBER OF YOUR EQUIPMENT, TOGETHER WITH THE CORRECT PART NUMBER, PART NAME AND DESCRIPTION, AND THE QUANTITY DESIRED. MAKE CERTAIN THAT ONLY GENUINE PARTS ARE USED.

THE MODEL 816 OLATHE CHIPPER UNITS HAVE A SERIAL NUMBER PLATE RIVETED TO THE TOP DRUM COVER. RECORD THE SERIAL NUMBER OR YOUR MODEL 816 CHIPPER-POWER UNIT IN THE SPACE PROVIDED BELOW.

SERIAL NUMBER: _____

TABLE OF CONTENTS

GUARANTEE	PAGE	1
BLADE GUARANTEE	PAGE	2
FOREWARD & TABLE OF CONTENTS	PAGE	3
GENERAL INFORMATION, FEATURES & SET-UP INSTRUCTIONS	PAGE	4
OPERATION & SEFETY GUIDE	PAGE	5
OPERATING PROCEDURE	PAGE	6
MAINTENANCE & LUBRICATION	PAGE	7 & 8
ADJUSTMENTS	PAGE	9
PARTS ILLUSTRATIONS & PARTS LIST	PAGE	10- 13
SPECIFICATIONS	PAGE	14- 18

OLATHE MANUFACTURING
PARTS CATALOGUE

PAGE: 1

MODEL: 816

PART NUMBER	QUANTITY PER MODEL	UN S	OBSOLETE NUMBER	PART NAME	PART DESCRIPTION	LIST PRICE	COST
01-113-0030	2.00	EA P	200-051	BEARING	PB 2 15/16	177.62	115.45
01-150-0900	15.00	EA P	300-615	BLADE BOLT FHSCS	3/4-10 X 2 DRIVE 1/2 GR8	3.62	2.35
01-150-1150	15.00	EA P	300-610	BLADE BOLT FHSCS	1/2-13 X 2 5/16 DRIVE	1.04	.67
01-202-0030	2.00	EA P	01-202-0010	HOSE CLAMP	5/16 - 5/8	1.40	.91
01-205-0010	3.40	FT R	01-205-0020	FUEL LINE HOSE	1/4" 4 PON	1.06	.69
01-215-0080	2.00	EA P		GREASE ZERK	3/8" 45 DEGREE	1.21	.79
01-217-0050	1.00	EA P	01-217-0010	HOSE BARB	4290-4-4 MALE PIPE 90	2.79	1.81
01-260-0500	1.00	EA P	208-032	BUSHING	SF 2 15/16 OD	30.54	19.85
01-260-0510	1.00	EA P	208-054	SHEAVE	SF 6/3V14.00 OD	149.46	97.14
01-260-0530	1.00	EA P	200-151	BUSHING	SK 1 3/4 OD	23.46	15.25
01-260-0540	1.00	EA P	200-152	SHEAVE	SK 6/3V8.00	78.49	51.02
01-261-0360	2.00	EA P	208-062	SPRING	2 X 2 1/2 EXTRA HEAVY	36.25	23.56
01-264-0130	2.00	EA P	208-053	BELT	3/3V1320	126.33	82.11
01-271-0010	6.00	FT R		RUBBER	1/8 X 1 PVK	.31	.20
01-271-0090	24.75	FT R		RUBBER	1/8 X 5 PVK 120	3.27	2.12
01-280-0100	1.00	EA P	200-202	GAS TANK	22 GALLON	176.21	114.54
01-283-0190	3.00	EA E	708-192	BLADE 1 X 3 5/8 X 16	10 BOLT	175.00	131.25
01-352-0010	3.00	EA P		PAINT "OLATHE WHITE"	F-68W	33.38	21.69
01-362-0010	1.40	FT R		RUBBER SEAL	3/8THK X 3/4 SPONGE TYPE	2.05	1.33
01-500-0030	1.00	EA P	201-007	SERIAL NUMBER PLATE	ALUMINUM PLACARD	.99	.64
01-501-0300	2.00	EA P	200-126	DECAL OLATHE CHIPPER	5 X 28 BLK ON WHT	3.33	2.16
01-501-0380	2.00	EA P	200-131	DECAL GREASE	1 X 2 1/2 BLK ON SILVER	.21	.14
01-501-0400	2.00	EA P	204-181	DECAL CAUT ROTATING BLADE	5 X 8 RED ON WHT	1.44	.93
01-501-0440	2.00	EA P	208-019	DECAL OLATHE CHIPPER ETC	7 X 13 BLK ON WHT	2.04	1.33
01-501-0470	1.00	EA P	208-070	DECAL OPERATING PRECAUTN	6 3/4 X 5 3/4 BLK ON WHT	5.39	3.50
01-501-0540	3.00	EA P	208-066	DECAL MODEL 816	4 X 4 BLK ON WHT	3.09	2.01
01-600-0030	1.00	EA P	200-144	BATTERY CABLE	48" POSITIVE 4 GA	4.52	2.94
01-600-0050	1.00	EA P	200-143	BATTERY CABLE	10" NEGATIVE 4 GA	1.89	1.23
01-600-0080	1.00	EA P		BATTERY	F-24	110.13	71.58
01-603-0060	1.00	EA P		SWITCH	PUSH/PULL	13.59	8.83
01-609-0010	1.00	EA P	200-026	GOGGLES		4.26	2.77
12-004-0721	1.00	EA M	700-309	APRON LOCKING PIN		.00	.00
12-004-1271	2.00	EA M		CHUTE TOP REINFORCEMENT		.00	.00
17-204-0411	1.00	EA M	700-093	KILL SWITCH BRACKET		4.50	2.92
17-204-0551	2.00	EA M	700-435	H-STAND BRACKET	3/4 SCH 40 STRU	.00	.00
17-204-0811	2.00	EA M		CHUTE ADJ PIN BRACKET		.00	.00
17-204-0981	2.00	EA M	708-145	CHUTE ARM BRACE		.00	.00
17-204-1331	4.00	EA M	700-196	DRUM SHAFT STOP		3.60	2.34
17-204-1741	2.00	EA M		RUBBER GAS STRAP	1/8 X 1 X 12 LG	3.60	2.34
17-204-1751	2.00	EA M		RUBBER GAS STRAP	1/8 X 1 X 24 LG	3.60	2.34
17-204-1761	1.00	EA M		PUSH TAB BOLT	1/2-13	.00	.00
17-204-1771	1.00	EA M		PUSH TAB BRACKET		.00	.00
17-205-0211	1.00	EA W		PUSH TAB WELDMENT		5.40	3.51
30-005-0121	2.00	EA W		GAS TANK STRAP ASY		21.60	14.04
33-004-0251	1.00	EA M		CHUTE SEAL	3/8 X 3/4	3.60	2.34
33-004-0851	1.00	EA M	700-741	CHUTE DEFLECTOR		45.00	29.25
81-602-0012	1.00	EA A		HEAD		.00	.00
81-604-0271	1.00	EA M	700-028	BELT GUARD MOUNTING		.00	.00
81-604-0281	2.00	EA M		FEED PLATE BRACE		.00	.00

OLATHE MANUFACTURING
PARTS CATALOGUE

PAGE: 3

MODEL: 816

PART NUMBER	QUANTITY PER MODEL UN S		OBSOLETE NUMBER	PART NAME	PART DESCRIPTION	LIST PRICE	COST
81-604-0901	2.00	EA M	708-017	CHUTE MOUNT		.00	.00
81-604-0911	2.00	EA M	708-019	SAFETY MOUNT ANGLE	3/8 X 3 X 3	.00	.00
81-604-0921	1.00	EA M	708-027	CHUTE EXTENSION MOUNTING	MODEL 816	.00	.00
81-604-0931	1.00	EA M	708-029	OPEN TOP MOUNTING	MODEL 816	.00	.00
81-604-0941	1.00	EA M	708-030	FRONT GUSSET		.00	.00
81-604-0951	2.00	EA M	708-052	HEAD FILLER		.00	.00
81-604-0961	1.00	EA M	708-066	CHUTE TOP		.00	.00
81-604-0971	4.00	EA M	708-071	PIVOT SUPPORT		.00	.00
81-604-0981	2.00	EA M	708-100	SIDE GUSSET		.00	.00
81-604-0991	2.00	EA M	708-120	HEAD FILLER STRAP		.00	.00
81-604-1001	1.00	EA M	708-150	BELT TIGHTENING	5/8-11	.00	.00
81-604-1011	1.00	EA M	708-151	FEED PLATFORM HINGE	1 1/2 OD X 9/32 WA	.00	.00
81-604-1021	4.00	EA M	708-175	HEAD SIDE		.00	.00
81-604-1031	4.00	EA M	708-185	CENTER HEAD BRACE		.00	.00
81-604-1041	4.00	EA M	708-186	BOTTOM HEAD BRACE		.00	.00
81-604-1051	4.00	EA M	708-187	TOP HEAD BRACE		.00	.00
81-604-1061	2.00	EA M	708-189	PIVOT GUIDE	1 1/2 OD X 9/32 WA	.00	.00
81-604-1131	11.00	EA M		SAFETY FLAP	1/8 X 5 PVK 120	18.00	11.70
81-604-1141	1.00	EA W	700-429	CHUTE REINFORCEMENT		.00	.00
81-604-1151	4.00	EA M		APRON HOLE REINFORCEMENT		4.50	2.92
81-604-1191	1.00	EA M		ENGINE SPACER		1.35	.87
81-605-0102	1.00	EA W		FEED PLATFORM		864.00	561.60
81-605-0123	1.00	EA M		MODEL 816 HEAD ONLY		4750.00	3562.50
81-605-0132	1.00	EA W		CHUTE	MODEL 816	504.00	327.60
81-605-0142	1.00	EA W		THROW OUT HANDLE		135.00	87.75
81-605-0151	1.00	EA W		BELT TIGHTENING BOLT		5.40	3.51
81-605-0161	2.00	EA W		HEAD FILLER PLATE		21.60	14.04
81-605-0172	1.00	EA W		BELT GUARD ASY		324.00	210.60
81-605-0181	2.00	EA W		BEARING BRACKET		32.40	21.06
81-605-0190	1.00	EA W		DRUM ASY		3099.60	2014.74
81-605-0212	1.00	EA W		APRON BOTTOM		648.00	421.20
81-605-0221	1.00	EA W		"H"-STAND		102.60	66.69
81-605-0231	1.00	EA W		CHUTE PIN		27.00	17.55

SPECIFICATIONS - MODEL 816 OLATHE SUPER CHIPPER.

HEAVY DUTY INDUSTRIAL GASOLINE ENGINE - 172 WHITE

NO. CYLINDERS:-----FOUR (4).
DISPLACEMENT:-----163 CUBIC INCHES.
STARTER:-----ELECTRIC, 12 VOLT SYSTEM.
COOLED:-----WATER COOLED.
CLUTCH:-----HEAVY DUTY TRUCK TYPE.
INSTRUMENTS:-----HOUR METER, TACHOMETER, WATER TEMPERATURE
GAUGE, OIL AND ALTERNATOR INDICATOR LIGHTS,
KEY LOCK AND STARTER SWITCH.
CONTROLS:-----CHOKE, AIRCRAFT TYPE THROTTLE CONTROL.
MUFFLER:-----ONE (1).
GOVERNOR:-----MECHANICAL, ADJUSTABLE.
OIL FILTER:-----STANDARD,
AIR CLEANER:-----HEAVY DUTY, OIL BATH.
FUEL TANK:-----22 GALLON MOUNTED AWAY FROM ENGINE FOR
SAFETY.

TRAILER

DESCRIPTION:-----THE MODEL 816 CHIPPER SHALL BE MOUNTED ON
A SINGLE-AXLE TRAILER, PULL TYPE, WITH
FOLDING SCREW JACK, CASTER WHEEL, AND
ADJUSTABLE FRONT AND REAR SUPPORT LEGS.
FRAME:-----UNITIZED ALL WELDED CONSTRUCTION.
MATERIAL:-----4 X 4 X 3/8 INCH ANGLE.
DRAW BAR:-----ADJUSTABLE FOR HEIGHT, TELESCOPING FOR
LENGTH.
HITCH:-----CHOICE OF BALL HITCH, DROP PIN, OR 3
INCH ID PINTLE EYE.
AXLE:-----HEAVY DUTY TO SUPPORT GVW OF 5200 POUNDS.
SPRINGS:-----TWO (2) SIX LEAF.
TIRES:-----7.00 X 15 (8 PLY).
BEARINGS:-----HIGH-SPEED TIMKIN.
WHEELS:-----TWO (2), FIFTEEN INCH DROP CENTER.
FENDERS:-----JEEP TYPE, WELDED.
LIGHTING:-----TWO (2) COMBINATION TAIL, STOP, SIGNAL
PROTECTED, SIDE LIGHTS ALL MEET ICC SAFETY
REQUIREMENTS. CONNECTORS INCLUDED.
TOOL BOX:-----LARGE CAPACITY, HEAVY GAUGE, WITH COVER.

• SPECIFICATIONS - MODEL 816 OLATHE SUPER CHIPPER CONT'D

POWER UNIT

HEAVY DUTY INDUSTRIAL GASOLINE ENGINE - 351

NO. CYLINDERS:-----EIGHT (V-8).
DISPLACEMENT:-----351 CUBIC INCHES.
STARTER:-----ELECTRIC, 12 VOLT SYSTEM.
COOLED:-----WATER COOLED.
CLUTCH:-----HEAVY DUTY TRUCK TYPE.
INSTURMENTS:-----HOUR METER, TACHOMETER, WATER TEMPERATURE
GAUGE, OIL AND ALTERNATOR INDICATOR LIGHTS,
KEY LOCK AND STARTER SWITCH.
CONTROLS:-----CHOKE, AIRCRAFT TYPE THROTTLE CONTROL.
MUFFLERS:-----TWO (2), EXTRA QUIET.
GOVERNOR:-----MECHANICAL, ADJUSTABLE.
OIL FILTER:-----STANDARD.
AIR CLEANER:-----HEAVY DUTY, OIL BATH.
FUEL TANK:-----TWENTY-TWO (22) GALLON. MOUNTED AWAY FROM
ENGINE FOR SAFETY.
SIDE PANELS:-----REMOVABLE, WITH HASPS, OPTIONAL.

HEAVY DUTY INDUSTRIAL GASOLINE ENGINE - 300 CID

NO. CYLINDERS:-----SIX (6).
DISPLACEMENT:-----300 CUBIC INCHES.
STARTER:-----ELECTRIC, 12 VOLT SYSTEM.
COOLED:-----WATER COOLED.
GROSS HP:-----165 AT 3600 RPM.
MAX GROSS TORQUE:-----294 AT 2000 RPM.
CLUTCH:-----HEAVY DUTY TRUCK TYPE.
INSTRUMENTS:-----HOUR METER, TACHOMETER, WATER TEMPERATURE
GAUGE, OIL AND ALTERNATOR INDICATOR LIGHTS,
KEY LOCK AND STARTER SWITCH.
CONTROLS:-----CHOKE, AIRCRAFT TYPE THROTTLE CONTROL.
MUFFLERS:-----TWO (2).
GOVERNOR:-----MECHANICAL, ADJUSTABLE.
OIL FILTER:-----STANDARD.
AIR CLEANER:-----HEAVY DUTY, OIL BATH.
FUEL TANK:-----TWENTY-TWO (22) GALLON. MOUNTED AWAY FROM
ENGINE FOR SAFETY.
SIDE PANELS:-----REMOVABLE, WITH HASPS, OPTIONAL.

SPECIFICATIONS - MODEL 816 OLATHE SUPER CHIPPER CONT'D

BED KNIFE - CUTTER BAR

DIMENSIONS:-----FIVE-EIGHTS (5/8) INCH SQUARE.
MATERIAL:-----STEEL 1018 CARBON. TUNGSTEN CARBIDE EDGE
FOR LONGER WEAR.
ADJUSTMENTS:-----MOVABLE CUTTER DRUM TO CUTTER BAR.
LOCATION:-----REAR ARC OF CHIPPER BLADE WELDED TO FEED
PLATFORM.

SAFETY KILL SWITCH

DESCRIPTION:-----STOPS ENGINE WHEN ACTIVATED.
ACTUATOR:-----TWO HANDLES ON EITHER SIDE OF THE FEED.
APRON (TABLE) RELEASE SWITCH.
ADJUSTMENTS:-----FULL ADJUSTMENTS AND REMOVABLE.

FEED OPENING

WIDTH:-----SIXTEEN AND ONE-HALF (16-1/2) INCHES.
HEIGHT:-----NINE (9) INCHES.

FEED TABLE OR APRON

LENGTH:-----MORE THAN SIXTY (60) INCHES FROM CUTTER
TO END.
WIDTH:-----FIFTY-TWO (52) INCHES AT WIDEST (REAR).
POSITIONS:-----WELDED TO FRAME. HINGED.
MATERIAL:-----TEN (10) GAUGE STEEL REINFORCED WITH BLACK.
3/4 INCH PIPE.

DISCHARGE CHUTE

LENGTH:-----THIRTY-THREE (33) INCH, 10 GAUGE PRIMARY
EXHAUST, WITH HINGED SEVENTY-SIX (76)
INCH SECTION. TOTAL = 109 INCHES.
WIDTH:-----SIXTEEN (16) INCHES FULL LENGTH.
DEPTH:-----EIGHT (8) INCHES.
DEFLECTOR BONNET:--FULL VERTICAL ADJUSTMENT (OPTIONAL RIGHT
AND LEFT DISCHARGE DEFLECTOR).
DESCRIPTION:-----HINGED FOR EASY ACCESS TO PARTS AND
STORAGE, TRANSPORTING, EASILY REMOVABLE.

FEED PLATFORM

DESCRIPTION:-----HINGED, REMOVABLE, ATTACHED TO THE CHIPPER
UNIT WITH SAFETY SHEAR BOLTS TO ALLOW
PLATFORM TO PIVOT DOWNWARD.

SPECIFICATIONS - MODEL 816 OLATHE SUPER CHIPPER CONT'D

CYLINDER SUPPORT

BEARINGS:-----TWO (2) SELF-ALIGNING, DOUBLE INTERLOCK
TIMKEN ROLLER BEARINGS, TOLERANCED TO SHAFT
FROM A MINUS .0000 TO A PLUS .0010.
LUBRICATION:-----SPRING-LOADED DUST COVER TO PRESSURE
ZERK GREASE FITTING.
SEALS:-----BALANCED LABYRINTH AND DYNAFACE.
MOUNTING:-----PILLOW BLOCK.

SN 816026 & UP:-----TWO (2) SELF-ALIGNING, SPHERICAL ROLLER
BEARINGS, PILLOW BLOCK.

CYLINDER DRIVE

CLUTCH:-----ENGAGE FROM ENGINE, HEAVY DUTY TRUCK TYPE.
BELT:-----TWO (2) 3V 132 POWERBANDS.
RPM (CYLINDER):-----1120 AT ENGINE 2000.
ADJUSTMENTS:-----CYLINDER HOUSING, THREADED ADJUSTMENT
FOR POWERBAND TAKE-UP.
GUARDS:-----ALL MOVING PARTS ARE WELL GUARDED FOR
SAFETY.

CYLINDER HOUSING

MATERIAL:-----SHEET METAL REINFORCED WITH 3/8" X 3 X 3
INCH ANGLE AND 3/8 INCH FLAT.
COVER:-----1/4" STEEL.
FEED OPENING:-----NINE BY SIXTEEN AND ONE-HALF INCHES
(9 X 16-1/2").
ACCESS:-----COVER UNBOLTS FOR COMPLETE ACCESS TO
CYLINDER AND BLADES.

CHIPPING BLADES

MATERIAL:-----TOOL STEEL.
LENGTH:-----SIXTEEN (16) INCHES.
WIDTH:-----THREE AND FIVE-EIGHTS (3-5/8) INCHES.
THICKNESS:-----ONE (1) INCH.
CUTTING EDGE:-----GROUND TO A THIRTY DEGREE (30°) ANGLE
WITH A SEVENTY-FIVE DEGREE (75°) TIP.
NUMBER:-----THREE (3) CHIPPING BLADES.
SUPPORT:-----FIVE (5) 3/4 INCH FLAT HEAD SOCKET
ALLEN BOLTS, GRADE 8, 5-1/2 FHSC GRADE 8.
WARRANTY:-----ONE YEAR AGAINST BREAKAGE, FOUR (4)
MONTHS AGAINST SHARPENING FROM ORIGINAL
PURCHASE.

Olathe Manufacturing, Inc.

100 INDUSTRIAL PARKWAY
INDUSTRIAL AIRPORT, KANSAS 66031

PH: (913) 782-4398
1-800-255-6438

SPECIFICATIONS - MODEL 816 SUPER CHIPPER

JANUARY 1980

IT IS THE INTENT OF THESE SPECIFICATIONS TO DESCRIBE A SIXTEEN (16) INCH BRUSH AND LIMB CHIPPER. THE CHIPPER SHALL BE ABLE TO CHIP KILN-DRIED LUMBER WITHOUT REGARD TO SMALL NAILS, BANDING WIRE, OR FOREIGN MATERIAL AS WELL AS CHIP GREEN AND DRY BRUSH.

THE MODEL 816 CHIPPER IS TO BE MOUNTED ON A SINGLE-AXLE TRAILER AND POWERED BY AN INDUSTRIAL ENGINE. THE TRAILER MUST HAVE SUFFICIENT CAPACITY TO SUPPORT A GVW 5200 POUNDS UNDER ALL NORMAL CHIPPING CONDITIONS AND AT HIGHWAY SPEEDS.

THE MODEL 816 IS DESIGNED TO OPERATE QUIETLY, WITHOUT THE USUAL AIR SCREECHING NOISE.

SPECIFICATIONS

ALL SPECIFICATIONS AND GENERAL CONSTRUCTION OF THE MODEL 816 CHIPPER EXCEED OR EQUAL ALL OF THE LATEST KNOWN SAFETY REQUIREMENTS FOR BRUSH LIMB CHIPPERS.

CHIPPING UNIT

CYLINDER BODY

DESCRIPTION:-----FIVE (5), 1-1/2 INCH THICK STEEL PLATES
WELDED TO A SINGLE SHAFT WITH AN AIR
ESCAPE SPACE BETWEEN EACH.

MATERIAL:-----FLAME CUT STEEL PLATES, MACHINED.

DIAMETER:-----TWENTY-FIVE (25) INCH; WITH BLADES,
TWENTY-SIX AND ONE-HALFINCHES (26-1/2").

LENGTH:-----SIXTEEN (16) INCHES.

NO. OF KNIVES:-----THREE (3).

CYLINDER SHAFT

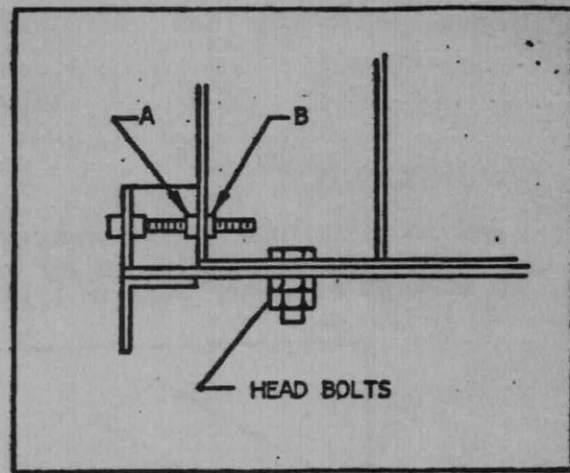
MATERIAL:-----COLD ROLL ROUND, 1018 CARBON STEEL.

LENGTH:-----TWENTY-NINE (29) INCHES, KEYED.

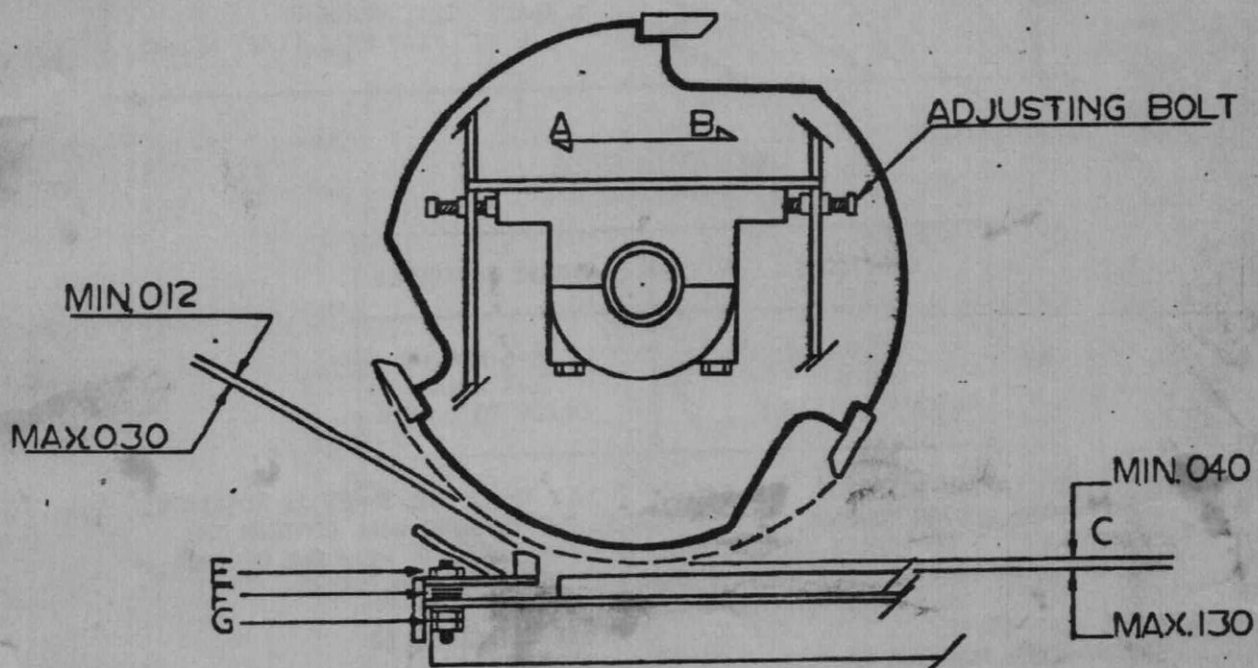
DIAMETER:-----THREE (3) INCHES, MACHINED TO EXACT
TOLERANCE FOR TWO 2-15/16 INCH BEARINGS.

ADJUSTMENTS

DRIVE BELTS: TO TIGHTEN, LOOSEN THE FOUR BOLTS THAT HOLD THE HEAD TO THE FRAME, LOOSEN NUT 'A', ROTATE NUT 'B' CLOCKWISE UNTIL DESIRED ADJUSTMENT IS REACHED. RETIGHTEN HEAD BOLTS.



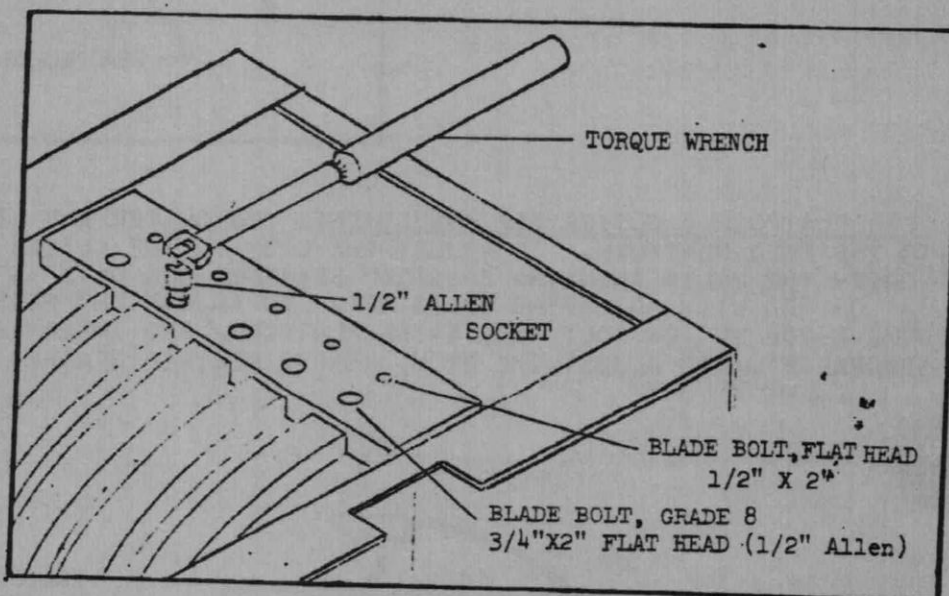
FEED PLATFORM & CUTTER BAR ADJUSTMENT: THE CUTTER BAR IS WELDED TO THE FEED PLATFORM. TO ADJUST THE DRUM TO THE CUTTER BAR, LOOSEN THE BOLTS SECURING 2-15/16" BEARINGS AND MOVE IN DIRECTION 'A' OR 'B' WITH ADJUSTING BOLTS 'F'. TO ADJUST THE FEED PLATFORM REMOVE TOP NUT ON BOLT 'E', RAISE PLATFORM, AND INSERT ANOTHER SPACER 'F'. TO ADJUST THE DRUM, REMOVE DESIRED SPACERS.



MAINTENANCE

BLADE BOLTS

CHECK AFTER FOUR TO EIGHT HOURS OF OPERATION. CHECK UNTIL BOLTS REMAIN TIGHT. TO CHECK, REMOVE THE TOP BLADE COVER AND TIGHTEN THE TEN BLADE BOLTS TO A MINIMUM TORQUE OF 125 FOOT POUNDS.



LUBRICATION GUIDE

CONDITIONS	GREASE INTERVALS
CLEAN	1-6 MONTHS
DIRTY	1-4 WEEKS
EXTREME MOISTURE	DAILY TO 1 WEEK

WHEN LUBRICATING BEARINGS, ADD GREASE SLOWLY WHILE THE SHAFT IS ROTATING. WHEN GREASE BEGINS TO COME OUT THE SEALS, THE BEARING WILL CONTAIN THE CORRECT AMOUNT OF GREASE. FOR GENERAL USE, RELUBRICATE WITH ONE OF THE FOLLOWING GREASES OR EQUIVALENT GREASES BY OTHER MANUFACTURERS.

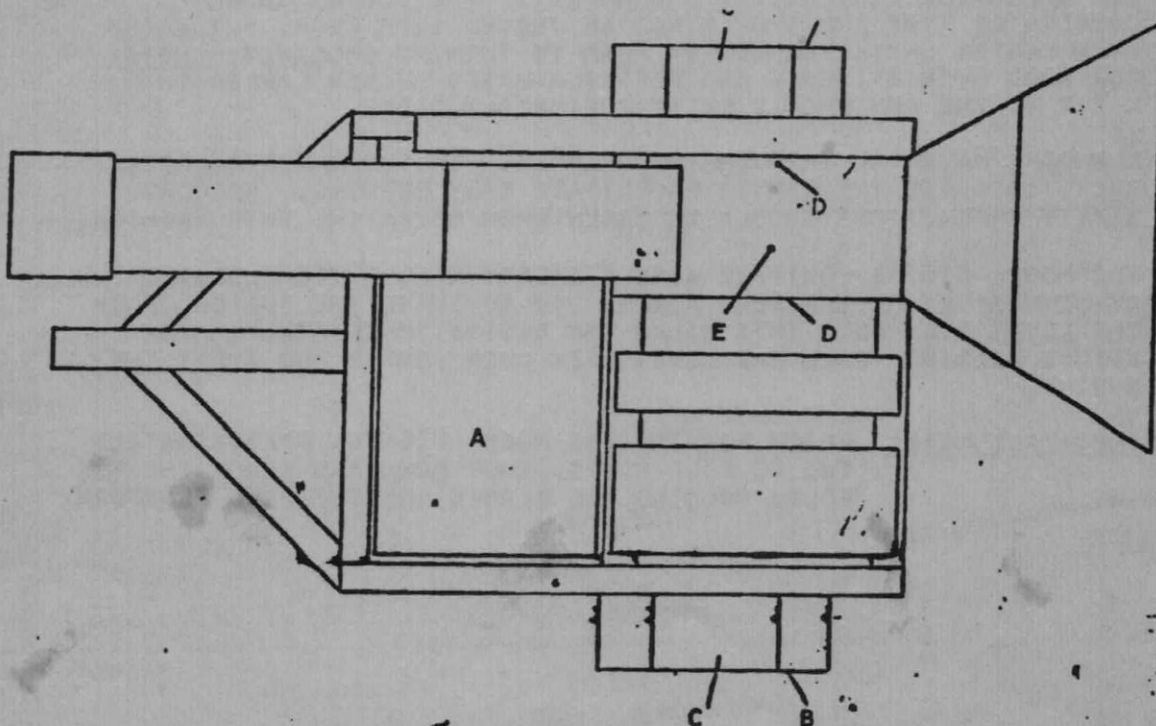
SHELL ALVANIA #2
 SOCONY-MOBIL MOBILUX #2
 TEXACO MULTIFAK #2
 PURE HT #2 E.P.

SINCLAIR LITHOLENE #2
 SUN PRESTIGE #41
 FISKE'S #5433 LUBRICANT #2 GRADE

MAINTENANCE AND LUBRICATION

THE MODEL 816 OLATHE CHIPPER HAS BEEN DESIGNED FOR A MINIMUM AMOUNT OF MAINTENANCE. THE FOLLOWING CHART MAY BE USED AS A GUIDE TO MAINTENANCE AND LUBRICATION.

- A. ENGINE - READ THE FORD MANUAL CAREFULLY AND SERVICE ACCORDINGLY. NOTE THE RADIATOR IS NOT SERVICED AT THE FACTORY.
- B. TIRES - CHECK FOR EVEN PRESSURE. APPROXIMATELY 55 LBS. IS RECOMMENDED.
- C. BEARINGS: WHEEL HUB - GREASE ZERKS ARE LOCATED ON EACH HUB. GOOD GRADE OF WHEEL GREASE IS RECOMMENDED. NOTE: SOME EARLY MODELS MAY NOT HAVE THE GREASE ZERKS AND SHOULD BE REPACKED APPROXIMATELY EVERY 2000 MILES.
- D. CUTTER HEAD BEARINGS - THIS BEARING HAS BEEN GREASED AT THE FACTORY AND IS READY TO RUN. CERTAIN CONDITIONS SUCH AS WATER OR EXCESSIVE DUST MAY REQUIRE A CHANGE OF LUBRICATING PERIOD AS DICTATED BY EXPERIENCE. THE BEARINGS ARE LUBRICATED AT THE FACTORY WITH #2 CONSISTENCY LITHIUM BASE GREASE.
- E. JOINTS, THREADS - LUBRICATE PERIODICALLY TO PREVENT STICKING.



OPERATING PROCEDURE

READ THE ENGINE AND OWNERS MANUALS CAREFULLY. ACQUAINT YOURSELF WITH THE CONTROLS OF THE CHIPPER (CLUTCH, SAFETY KILL SWITCH). FAMILIARIZE YOURSELF WITH THE ADJUSTMENTS AND TOLERANCES. *SEE THE ADJUSTMENT SECTION OF THIS MANUAL FOR DETAILS.

THE MODEL 816 IS EQUIPPED WITH A BALL, PINTLE, OR DROP PIN HITCH, AND MAY BE ATTACHED TO ANY APPROPRIATE VEHICLE. A SCREW JACK AND A FRONT SUPPORT STAND ARE MOUNTED ON THE TRAILER TONGUE. WHEN LIFTING THE CHIPPER, THE SCREW JACK MAY BE USED. PIVOT THE JACK INTO USER POSITION AND TURN CLOCKWISE TO RAISE AND COUNTER-CLOCKWISE TO LOWER. WHEN OPERATING THE CHIPPER UNATTACHED TO A VEHICLE, PLACE THE REAR SUPPORT STAND IN THE DOWN POSITION BY REMOVING THE DRIVE PINS AND PLACING THE STAND IN THE DESIRED POSITION. REPLACE THE DRIVE PINS THROUGH STUDS. THE DESIRED POSITION. REPLACE THE DRIVE PINS THROUGH STUDS. THE SCREW JACK IS NOT TO BE USED TO PROPEL OR MOVE THE CHIPPER GREAT DISTANCES.

AFTER STARTING THE ENGINE, ENGAGE THE CLUTCH AT A LOW RPM, APPROXIMATELY 1000 TO 1500, THEN INCREASE TO RUNNING SPEED. THE MODEL 816 IS EQUIPPED WITH AN HOUR METER AND TACHOMETER FOR OPERATING CONVENIENCE AND SAFETY. THE CLUTCH IS AN OVERCENTER TYPE AND SHOULD NOT BE JERKED INTO GEAR, BUT EASED OVER CENTER UNTIL THE CUTTER HEAD IS TURNING SMOOTHLY. NOTE: FOR WOOD OVER 4 INCHES AND FOR KILN-DRIED LUMBER LARGER THAN A 2 X 4, THE RPM SHOULD BE APPROXIMATELY 2400.

RUN SOME MATERIAL THROUGH THE CHIPPER. IF THE MATERIAL KICKS BACK, INCREASE THE RPM TO FACILITATE EASY FEEDING. ADEQUATE SAFETY PRECAUTIONS SHOULD BE TAKEN WHEN OPERATING THIS MACHINE.

THE MODEL 816 IS EQUIPPED WITH A SAFETY KILL SWITCH LOCATED AT BOTH SIDES OF THE FEED APRON. TO ACTIVATE THE SWITCH, PUSH THE LEVER FORWARD. THIS KILLS THE ENGINE IMMEDIATELY. TO RESUME FEEDING, PULL THE LEVER BACK OVER CENTER AND START THE ENGINE.

IMPORTANT NOTE: AFTER RUNNING THE MODEL 816 FOR APPROXIMATELY TWO TO FOUR HOURS, SHUT DOWN AND CHECK THE BOLTS HOLDING THE BLADES AND THE FEED PLATFORM.

OPERATION AND SAFETY GUIDE

1. FOR OPERATOR SAFETY, OLATHE MANUFACTURING, INC., RECOMMENDS THE USER WEAR LOOSE, LIGHTWEIGHT GLOVES, SAFETY GOGGLES, HARD HATS AND REINFORCED WORD BOOTS.
2. WHEN FEEDING BRUSH INTO THE CHIPPER, START THE BUTT END FIRST.
3. ENGAGE THE CUTTER HEAD AT A LOW RPM, THEN INCREASE THE ENGINE RPM TO 1500 TO 2500.
4. WHEN THE CHIPPER IS IN OPERATION, APPROACH IT FROM THE SIDES. WHEN FEEDING THE CHIPPER, DO NOT STAND DIRECTLY IN BACK OF THE MACHINE.
5. THERE IS NO ADJUSTMENT ON THE CUTTER BLADES. CHECK THE BLADE BOLTS PERIODICALLY FOR TIGHTNESS. THESE BOLTS SHOULD BE TORQUED TO AT LEAST 125 FOOT POUNDS.
6. WHEN USING THE CHIPPER UNATTACHED TO A VEHICLE, BE SURE TO USE THE REAR SUPPORT LEG.
7. KEEP CORRECT TENSION ON THE DRIVE BELTS.
8. THE CUTTER BLADES MAY BE SET TO THE CUTTER BAR TO HELP ACCOMMODATE ALL TYPES OF MATERIAL. FOR EXAMPLE, THEY MAY BE ADJUSTED TO WITHIN .010 INCH FROM THE CUTTER BAR TO HELP ELIMINATE LONG, STRINGY PIECES OR GREEN BRUSH.
9. AFTER INITIAL OPERATION OF APPROXIMATELY TWO TO FOUR HOURS, CHECK FOR LOOSE BOLTS, NUTS, ETC.

GENERAL INFORMATION

THE MODEL 816 OLATHE CHIPPER IS A TRAILER-MOUNTED CHIPPER CAPABLE OF CHIPPING GREEN OR DRY BRUSH, LIMBS, AND BRANCHES, AS WELL AS KILN-DRIED LUMBER, WITHOUT REGARD TO NAILS, WIRE, BANDING MATERIAL AND OTHER FOREIGN MATERIALS.

FEATURE

CUTTER HEAD - THE PATENT PENDING DRUM ENABLES THE MODEL 816 TO OPERATE WITHOUT THE LOUD SCREECHING NOISE COMMONLY ASSOCIATED WITH CHIPPERS.

SAFETY KILL SWITCH - THE MECHANISM IS ACTIVATED BY A NATURAL BODY MOVEMENT AND SHUTS THE ENGINE OFF IMMEDIATELY.

BLADES - THE BLADES ARE TOP QUALITY TOOL STEEL THAT WILL CUT GREEN OR DRY BRUSH AND KILN-DRIES LUMBER WITHOUT DAMAGE TO THE BLADES.

TRAILER MOUNTED - A HEAVY DUTY TRAILER GIVES THIS UNIT MOBILITY AND DURABILITY.

STANDARD PARTS - WHENEVER POSSIBLE, STANDARD PARTS HAVE BEEN USED TO SAVE THE USER EXPENSIVE PARTS AND COSTLY DOWNTIME.

SET-UP INSTRUCTIONS

CHECK THE MACHINE FOR POSSIBLE DAMAGE DURING SHIPMENT AND FOR MISSING OR LOOSE PARTS. THE MODEL 816 IS SHIPPED FULLY ASSEMBLED, WITH THE FOLLOWING EXCEPTIONS. THE WIRING IS INSTALLED TO THE FRAME AND THE LIGHTS ARE PACKAGED AND PLACED IN THE FEED OPENING FOR SHIPMENT. THE SCREW JACK IS ALSO SHIPPED IN THE FEED OPENING TO PREVENT DAMAGE DURING SHIPMENT.

FOR SHIPPING PURPOSES, THE EXHAUST CHUTE IS FOLDED BACK AND SECURED, OR THE EXTENSION PORTION IS SHIPPED SEPARATELY. FOR SET-UP, SECURE THE CHUTE EXTENSION TO THE HEAD UNIT, FOLD THE CHUTE EXTENSION FORWARD AND RUN THE EXTENSION ROD THROUGH THE DESIRED HOLE IN THE CHUTE STAND.

READ THE ENGINE MANUAL CAREFULLY AND SERVICE ACCORDINGLY.
NOTE: THE RADIATOR IS NOT SERVICED AT THE FACTORY. CHECK THE TIRE PRESSURE. THE CHIPPER IS READY FOR USE AS SHIPPED; HOWEVER, READ THE OWNERS MANUAL CAREFULLY AND FAMILIARIZE YOURSELF WITH THE MACHINE.

BLADE GUARANTEE

OLATHE MANUFACTURING, INC. OF OLATHE, KANSAS, GUARANTEES TO THE ORIGINAL PURCHASER THAT THE BLADES ARE FREE FROM DEFECTS IN WORKMANSHIP, OR MATERIALS THAT MAY CAUSE PERFORMANCE FAILURE, SUBJECT TO THE CONDITIONS HEREIN STATED.

THE GUARANTEE IS LIMITED TO A PERIOD OF ONE (1) YEAR FROM DATE OF PURCHASE IF USED FOR RENTAL PURPOSES, THE PERIOD OF TIME IS THREE (3) MONTHS. OLATHE MANUFACTURING, INC., WILL REPLACE ANY DEFECTIVE BLADES, EXCLUSIVE OF LABOR, FREE OF CHARGE, F.O.B. ANY AUTHORIZED OLATHE SERVICE STATION.

THIS GUARANTEE DOES NOT APPLY TO ANY BLADE THAT:

1. HAS BEEN REPLACED BY ANYONE OTHER THAN AN AUTHORIZED OLATHE SERVICE STATION.
2. HAS HAD PLACED UPON IT, OR ATTACHED TO IT, ANY PART OR PRODUCT NOT SOLD OR APPROVED BY OLATHE MANUFACTURING, INC.
3. HAS BEEN IMPROPERLY USED.
4. HAS NOT BEEN PROPERLY ADJUSTED OR MAINTAINED BY THE USER.