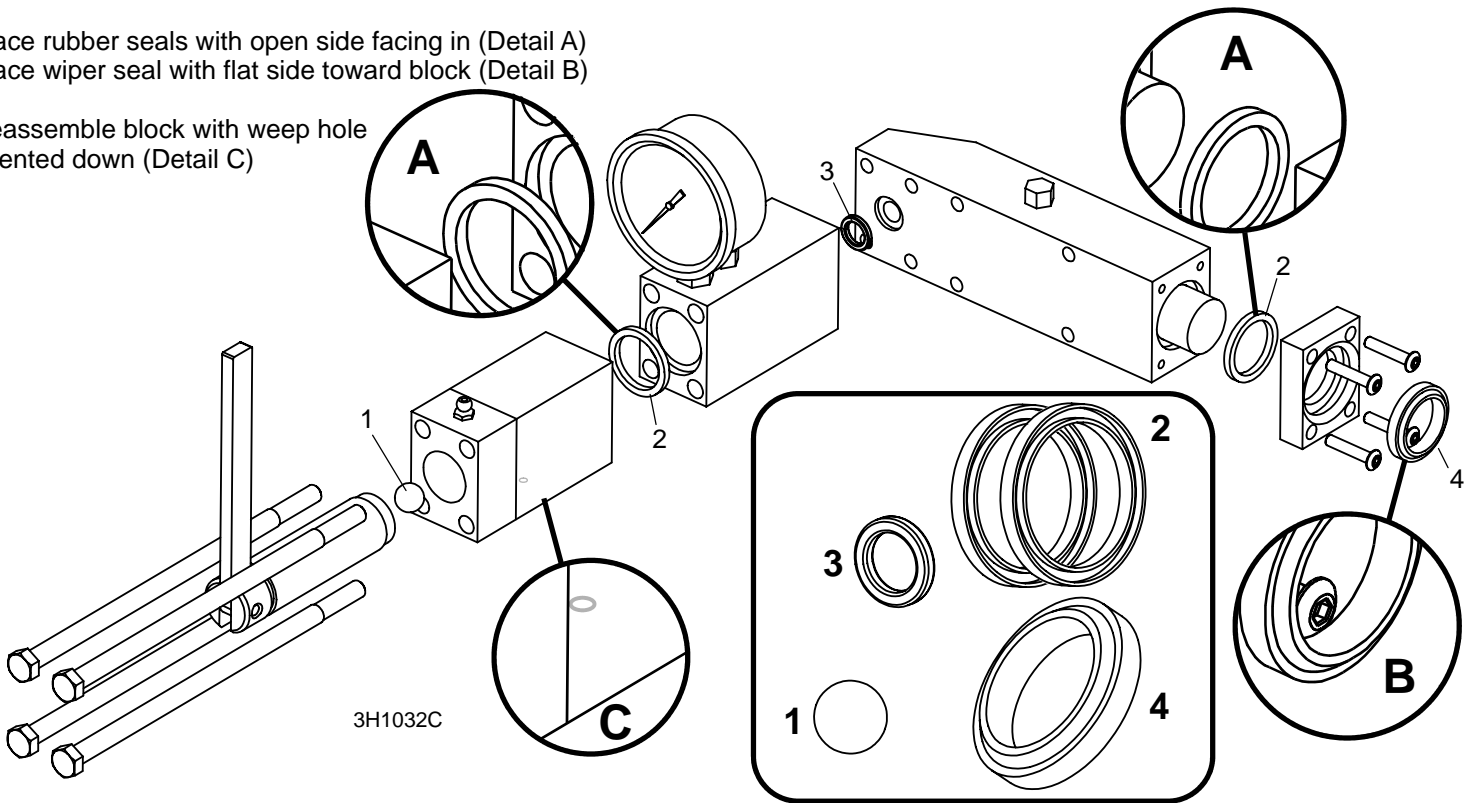


FORM 1605
HYDRAULIC BLADE TENSIONER
SEAL REPLACEMENT INSTRUCTIONS
Part No. 003224

Place rubber seals with open side facing in (Detail A)
Place wiper seal with flat side toward block (Detail B)

Reassemble block with weep hole
oriented down (Detail C)



FORM 1605
HYDRAULIC BLADE TENSIONER
SEAL REPLACEMENT INSTRUCTIONS
Part No. 003224

Place rubber seals with open side facing in (Detail A)
Place wiper seal with flat side toward block (Detail B)

Reassemble block with weep hole
oriented down (Detail C)

